

CAMPUS CONNECTIONS

EMPLOYEE NEWSLETTER

Issue 8

Vol 4

AUGUST 2024

WHAT'S INSIDE

2-3

ORGANIZATIONAL UPDATES

STATE OF THE STATE TOPIC
INTEREST SURVEY, EXPO PART 2:
CAMPUS SAFETY, BENEFITS TIME,
LISTENING SESSIONS, PAYROLL
REMINDERS, IARF,
RECRUITING NUMBERS

4

HIGHLIGHTS & OPPORTUNITIES

FFS TIER 2 STARTS, STAFF LISTENING
SESSIONS SCHEDULE, NORTHWESTERN
DESIGN INNOVATION

5-6

EMPLOYEE RESOURCES

GRIEF SERVICES AND RESOURCES,
ILLINOIS ACTION FOR CHILDREN, D&I
RESOURCE GUIDE, GHI DISCOUNTS, CPR
RECERTIFICATION, ICEBREAKERS

7

COMMUNITY SHOWCASE

LOYOLA CIP 2024, UPCOMING
EVENTS & ACTIVITIES

8

SPECIAL FEATURE

STAFF PERSONAL COLLECTION
SHOWCASE, CALL FOR SUBMISSIONS

9

FOR YOUR CONSIDERATION

LOCAL BUSINESSES, GET READY FOR
NAT'L YOGA MONTH, SONGS OF THE
SUMMER, DALEY FARMER'S MARKET

10-11

MONTHLY RECOGNITIONS

DEPARTMENT APPRECIATION,
ANNIVERSARIES, RAFFLE WINNERS,
WARM WELCOMES, IN MEMORIAM

2024 ART WALK



Pictured: A collage of the beautiful art pieces entered for the 2024 Art Walk, along with residents and staff in participation of.

As you stroll through campus, you may have seen some special pieces of artwork displayed along your path. The 2024 Art Walk is a culmination of a community coming together in the best possible way. The art pieces represent residents from all across campus and many different departments. This art walk highlights the talents and creativity of our residents and staff. Please take some time to walk the path with our residents and staff.

We wish to give a huge shout out to Kristine Monhollon for leading this project and fostering the concept of inclusivity. Additionally, we would like to thank all the staff and residents involved in making this initiative a success!

Please [click here](#) to see the full map of our 2024 Art Walk.



ORGANIZATIONAL UPDATES

YOUR INPUT IS REQUESTED **STATE OF THE STATE TOPIC** **INTEREST SURVEY**

In our continued effort to help further our communication and increase our transparency, we will hold another State of the State for all Misericordia employees on October 14.

Help us consider which topics to present by indicating your interests in the following themes* [in this link](#).

*Please note: the examples provided for each theme are not guaranteed to be presented at the State of the State.

SHARE YOUR PERSPECTIVES WITH US **STAFF EXPERIENCES LISTENING** **SESSIONS**

Throughout September, we will host another round of listening sessions in response to the Workforce Growth Project Staff Experiences survey that many of you and our workforce completed last summer. The survey gathered your feedback on teamwork, communication, leadership, growth and development, recognition & feeling valued, belonging, inclusivity, and safety throughout the organization. The goal for the listening sessions is to dig deeper into the positive responses and areas of improvement we heard, and we would especially like to hear from you!

Please continue to page 4 for a list of dates and times for Listening Sessions, and talk to your area's supervisor about signing up for one.

IN CASE YOU MISSED IT

Please see the list of announcements previously shared this month in Campus Connections or posted in your areas.

• **EXPO PART 2: CAMPUS SAFETY**

- Compliance training continues! Expo Part 2: Campus Safety launched this week, and Expo Part 3 and Sexual Harassment Prevention will all be launched on Infinitec throughout the next few months. Just like with the previous trainings, the link will be sent to your Misericordia email address. Completion of all training is mandatory for all Misericordia employees. Please see below for the timeline.
 - **Expo Part 2: Campus Safety: August 12 – September 13**
 - **Sexual Harassment Prevention Training: September 23 – October 25**
 - **Expo Part 3: Staff-Related Policies: November 4 – December 6**

• **BENEFITS TIME**

- As of July 1, 2024, our policy regarding the use of benefit hours will be modified to reflect the requirements of the new Chicago Paid Sick Leave and Chicago Paid Leave Ordinance. [Click here](#) to read more.

• **IMPORTANT REMINDERS FROM THE PAYROLL DEPARTMENT**

- It is the responsibility of each employee to swipe in and out for their shifts, this allows for accurate timekeeping for hours worked
- Picking up an extra shift does not constitute overtime if you have not worked over 40 hours in a week
- We follow the Department of Labor FLSA regulation for overtime. Overtime is calculated after working over 40 hours in a workweek
- CPL, CPSL, PTO, Floating Holiday, Sick Bank time and any other benefit hours are not hours worked and are not part of the overtime calculation
- When entering new direct deposit information, it may take two pay periods after your direct deposit request has been approved for your funds to be deposited to your banking account
- Employees claiming tax exempt on their Federal and/or State income tax withholdings must provide a signed W-4 tax form from ADP to the payroll dept before it will be approved
- If you have any questions, please contact the Payroll Department.



ORGANIZATIONAL UPDATES (CONT'D)

ILLINOIS ASSOCIATION OF REHABILITATION FACILITIES (IARF)

Illinois Association of Rehabilitation Facilities (IARF) is the largest statewide association of community-based providers in Illinois that serves adults and children with intellectual/developmental disabilities and mental illnesses. IARF's purpose is to help develop and improve services, act as a clearinghouse for information, and develop effective service methods for people with disabilities.

The 2024 IARF Educational Conference & Expo took place on Wednesday, August 28 at the Bloomington-Normal Marriott Hotel & Conference Center in Normal, Illinois. Topics at the conference ranged from Team Approach(es) to Mental Wellness to Authentic Happiness: An Effective Management Strategy.

The conference was attended by Nora Turgeon, Tina Stendardo, Geana Connelly, Elisa Page, Nick Stevic, Rachel Carr, Anacaren Perez, and Alyssa Martinez. This was a group comprised of Administration, People Leaders/Management, and direct support staff. This was a wonderful growth opportunity for them, and we look forward to sharing more of what they learned with the Misericordia community.

MISERICORDIA'S RECRUITMENT TEAM WILL BE AT FAMILY FEST 2024

Stop by our booth and say Hi! Have a friend, family member, or acquaintance interested in one of our open positions? We will be accepting applications at Family Fest. This will be a great (and fun) opportunity for anyone who may be interested in being considered for a role here at Misericordia to meet the Recruitment team and learn more about our organization's employment opportunities!

THE LATEST RECRUITMENT NEWS BY THE NUMBERS

Scheduled Direct Care Interviews
270

No Call No Shows
89

Forwarded to Directors after initial interview with recruitment
41

Accepted Offer (Direct Care)
23



DSP/CNA/THERAPY AIDE WEEK 2024



SEPTEMBER 9 - 13

[CLICK HERE](#) TO SEE THE FLYER FOR DSP/CNA/THERAPY AIDE WEEK 2024



HIGHLIGHTS AND OPPORTUNITIES

FIT FOR SUCCESS: TIER 2 STARTS AUGUST 29

Congratulations to the following staff who will begin Fit for Success: Tier 2! Over the next few months, the group will focus on the essential skills for teamwork and how we build strong teams committed to our Misericordia mission. We're so grateful for their interest in growing personally and professionally to better serve the residents. Ask them about their experience when you see them!

Hattie Lester	Shiloh Canellis
Rasheeda Johnson	Laura Tunningley
Jenni Moran	Bridget Gondek
Casey Stewart	Guy Tourangeau
Glori Uppal	Rolanda Williams
Alison Slak	Tanesha Baldarez
Taina Jones	Frankie Silva
Briana Walker	Thet Wai Aung
Jason Black	Teresa Holman
Therese Davis	Shanell Johnson

NORTHWESTERN DESIGN INNOVATION LET'S WORK TOGETHER TO SOLVE PROBLEMS

Northwestern University's Design Thinking & Communication (DTC) program invites you to join us in helping them engineer tangible solutions to any accessibility challenges that affect Misericordia's residents' independence and activities of daily life. Previously, staff submitted ideas to help the DTC program develop prototypes such as an [automatic dime sizer](#) to support residents in individually chopping food and [two-side shower ramps](#) for wheelchairs and walkers. [Click here](#) for more details. If you have ideas, please email them to Tiffany Johnson at tiffanyj@misericordia.com by August 26.

STAFF EXPERIENCES LISTENING SESSIONS

The goal for the listening sessions is to dig deeper into the positive responses and areas of improvement we heard, and we would especially like to hear from you!

FOR DIRECT CARE STAFF

- WEDNESDAY, SEPT. 11 ◦ 11 AM - 12 PM
- THURSDAY, SEPT. 12 ◦ 6 AM - 7 AM
◦ 3:30 PM - 4:30 PM
- FRIDAY, SEPT. 13 ◦ 2 PM - 3 PM
- MONDAY, SEPT. 16 ◦ 3:30 PM - 4:30 PM
- TUESDAY, SEPT. 17 ◦ 3:30 PM - 4:30 PM
- FRIDAY, SEPT. 20 ◦ 10 AM - 11 AM
◦ 2 PM - 3 PM
- MONDAY, SEPT. 23 ◦ 3:30 PM - 4:30 PM

FOR MANAGEMENT/PEOPLE LEADERS

- FRIDAY, SEPT. 13 ◦ 10:30 AM - 11:30 AM
- MONDAY, SEPT. 16 ◦ 10 AM - 11 AM
- MONDAY, SEPT. 23 ◦ 11 AM - 12 PM
- TUESDAY, SEPT. 24 ◦ 6 AM - 7 AM
◦ 2:30 PM - 3:30 PM
- FRIDAY, SEPT. 27 ◦ 1 PM - 2 PM
- MONDAY, SEPT. 30 ◦ 7 AM - 8 AM

FOR NON-RESIDENTIAL/ NON-DIRECT CARE STAFF

- WEDNESDAY, SEPT. 11 ◦ 2 PM - 3 PM
- TUESDAY, SEPT. 17 ◦ 6 AM - 7 AM



EMPLOYEE RESOURCES

MISERICORDIA GRIEF SERVICES AND RESOURCES



*From Andrew Blomquist
(Director of Ministry at Misericordia):*

It is always a challenge to grieve the loss of one of our beloved residents; no less so when we lose so many within such a short time. On behalf of the Ministry and Counseling departments, thank you for your efforts to continue supporting our residents especially during this time of personal and communal grief; as well, thanks to those of you who have reached out on behalf of yourselves and your colleagues to share your desire for staff support services.

In addition to when we're asked to host funeral and memorial services, please know that such services (Restore & Remember) are coordinated following the passing of each resident, by Miriam Hudson and myself, along with respective residential supervisors - please feel free to contact any of us in this regard (and know that multiple sessions are currently being scheduled). So, too, between the Counseling and Ministry departments, we have grief services for residents, available upon request.

Please let us know what we can do, collectively, to help support all, as we work through our grief and as we grieve.

[Click here](#) for a list of Misericordia Grief Services and Resources.

ILLINOIS ACTION FOR CHILDREN



Illinois Action for Children is the largest administrator of the Child Care Assistance Program in Cook County

As a new school year begins, we want to remind staff that Misericordia is still partnered with Illinois Action for Children (IAFC) to support current working parent staff and to help alleviate the childcare conflict that exists between work and family.

For staff seeking help to procure childcare, including before and after-school childcare, IAFC provides workplace childcare support to employees by providing resource and referral services. Some of their services include:

- A detailed consultation with an assigned IAFC staff member regarding all types of available childcare needs and services for children from 6 weeks - 12 years of age
- Confirmation of childcare openings through their extensive database of childcare providers
- Information about childcare financial assistance programs
- Follow-up check-ins during the child care search with a knowledgeable child care coordinator via e-mail and phone
- Additional resources based on needs, such as food security, housing, and domestic violence

[Click here](#) for more information. If you have questions, please contact Ashley Smith at asmith@misericordia.com.



EMPLOYEE RESOURCES

DIVERSITY AND INCLUSION JULY, AUGUST, SEPTEMBER RESOURCE GUIDE

[Click here](#) to see the D&I Resource Guide for July/August/September.

As a result of the suggestions we received from staff, Campus Connections, in partnership with the Diversity & Inclusion Committee, has created a quarterly resource guide related to cultural heritage observances designated by the [US Government](#) and national Intellectual/Developmental Disabilities (I/DD) health awareness months, all of which can be celebrated year-round.

Additionally, stay tuned to upcoming issues of Campus Connections in September to find out how to join the Diversity & Inclusion Committee.

CRP RECERTIFICATION CHANGE

We are changing CPR Recertification from every year to every 18 months, reducing our number of offerings. Supervisors will be informed of those expiring within the next 6 months and are responsible for signing up designated staff in a timely manner before their expiration date. Sign-up Genius will have the next 3 months of classes listed. Please make sure you inform the staff when you have signed someone up for CPR class. Failure to complete recertification prior to expiration will lead to the staff being held out of service until CPR is completed outside of Misericordia at the employee's expense and time. We do not want this to happen so communication with the Staff Development Team is vital when someone is signed up but cannot make it.

EMPLOYEE DISCOUNTS AT THE GREENHOUSE INN & BAKERY

Just a quick reminder about the great discounts available to you. You can enjoy a 10% discount at both the GHI and Main Bakery. This means you get 10% off all bakery items, including freshly baked goodies, gift boxes, and special occasion cakes.




To use your discount at Main Bakery, just enter the code `misemployee` when you check out. Check out all the options here: [Main Bakery Store](#).

If you have any questions or need further assistance, feel free to reach out to us at 773-272-4759 or bakery@misericordia.com.

BREAK THE ICE WITH THESE CONVERSATION STARTERS WITH CO-WORKERS

Courtesy of the Misericordia People Leadership Team

Would you rather....

-  Travel to the past or future?
-  Have more time or more money?
-  Explore space or the ocean?



COMMUNITY SHOWCASE

LOYOLA'S CIP 2024



Pictured: Students from the Loyola School of Social Work's Community Immersion Program (CIP)

The Loyola School of Social Work's Community Immersion Program (CIP) is a unique way to introduce first-year MSW students to their graduate path, while also assisting local organizations. The beauty of the program is that students are assigned their site based on proximity; where they can be immersed in the types of social work within their own community. Misericordia opened its campus for a two-day immersion for the students on August 20th and 21st. With 6 students and their Loyola liaison, Nora, they were first given a very heartfelt and informative tour of the campus by one of our Social Service Coordinators, Tasha, before volunteering in their assigned program areas, the Art and Bakery Department. They split into two groups, with each having the opportunity to volunteer in both areas throughout the next two days. Before they knew it, it was the final hour of their second day, and it was time to part ways. We would like to thank both the Art and Bakery Department for your wholehearted participation last week! The students sang a lot of praise about Misericordia, and their positive perception of our community was greatly a result of their warm interactions with the residents and your team.

UPCOMING EVENTS AND ACTIVITIES

• RESIDENT APPRECIATION DAY

- Scheduled on September 5, we are excited to welcome Dr. Mark and the Sutures for Resident Appreciation Day!

• FAMILY FEST

- Staff may come to HR starting Friday, August 23 to pick up two (2) complimentary Fest tickets for general admission to Family Fest on Sunday, September 8. Pick up for tickets will be available through September 6. If you are asking someone to pick up tickets for you, please provide a note and your signature. Staff working with the residents will receive \$15 in food tickets from their area director or supervisor. Residents will also get tickets from their area.

• MERCY DAY, SEPTEMBER 24



- This day marks the anniversary of the opening of the first "House of Mercy" in 1827 in Dublin, Ireland. Catherine McAuley, founder of the Sisters of Mercy, devoted her life to the poor, sick and uneducated and on this day, we continue her legacy of being caring and compassionate to those in need in the name of Mercy.

The Sisters of Mercy have been serving at Misericordia since it opened in 1921. We celebrate this day with you as you continue your dedicated service to our residents through your works of mercy. Thank you for your dedication and have a blessed Mercy Day.

"The tender Mercy of God has given us one another." - Catherine McAuley

• SPANISH MASS, OCTOBER 6

- Father Jack would like to invite staff to join us for a mass said fully in Spanish. We will start at 11 am. Mass will be in the chapel. Please join us if you can. RSVP directly to Anne Maddock at annem@misericordia.com. Stay tuned for more details.

CAMPUS CONNECTIONS



SPECIAL FEATURE

STAFF PERSONAL COLLECTION SHOWCASE



Pictured: A collection of vintage Apple computers and software from art instructor, Melissa B.

This is a part of our special staff spotlight.

From Melissa B (DT): "My first experience with the Apple 2 computer was in elementary school in the early 90s. I had learned how to type and played educational games during our 3rd grade scheduled computer lab time. The Apple 2 was initially released in the late 70s and stuck around until the mid 90s; at that point Apple created the Macintosh. I rediscovered the Apple 2 during college and started creating digital art with it. I then found groups of 'Apple 2 enthusiasts' that still used the computer even 30 years later. I attended the annual convention in 2010 and started my collection. I even met my husband at the same convention and we continue to attend the event every year. We currently own 7 different versions of the Apple 2 and still use them on regular basis."

CALL FOR SUBMISSIONS

In our continued effort to recognize and celebrate the unique stories, interests, and attributes of our diverse workforce, we are asking for submissions from staff to be featured in our special employee spotlights around a few topics listed below.

Personal Collection Showcase

Do you have a unique collection you're passionate about? We'd love to see it!

[submit here](#)

Your "Message From The Heart"

Share words of motivation and inspiration within our Misericordia community!

[submit here](#)

How to Submit:

Click the links above to fill out the quick submission forms. We look forward to hearing from you!

ACCESSIBLE PARKING ADVISORY



Please be advised that the handicapped parking space is reserved only for those with official Persons With Disabilities (PWD) parking permits or placards, **with no exceptions.**

Please [click here](#) for more details.

CAMPUS CONNECTIONS



FOR YOUR CONSIDERATION

LOCAL BUSINESSES FROM AROUND THE GLOBE

SEMILLAS PLANT STUDIO

1848 S Blue Island Ave, Chicago, IL 60608
[details here](#)

FIVE KEYS YOGA

1818 W Belmont Ave, Chicago, IL 60657
[details here](#)

KIDO CHICAGO

1137 S Delano Ct, Chicago, IL 60605
[details here](#)

Send us a tip! If you have recommendations for any local minority and women-owned businesses that Misericordia should know about it, [click here](#) and tell us about their goods and services. We may highlight your suggestion in future issues of Campus Connections!

GET READY FOR NATIONAL YOGA MONTH



September is National Yoga Month!

Please stay tuned for the coming weeks on yoga-related campus initiatives happening all of next month.

In the meantime, check out some free yoga being offered to the community:

[FREE Yoga at Gallagher Way](#)
3635 N Clark St, Chicago, IL 60613

[Tues & Thurs from 7:00 AM to 8:00 AM](#)

Are you interested in learning to teach yoga to our residents?

[Yoga for All Abilities®](#) (YAA) was developed by Sonia Sumar for her daughter Roberta, who was born with Down Syndrome in 1972. It is a safe and gentle method of yoga, which utilizes traditional yogic techniques.

Please reach out to Rita Alviar-Korovesis at ritaa@misericordia.com for information & guidance on YAA



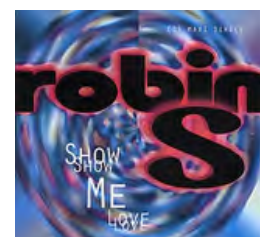
SHARE YOUR SUMMER SONGS WITH US

It is said that "music allows us to communicate common humanity to each other." This quarter we invite everyone to send us songs you associate with the summer season! Whether it's a current single topping the [streaming and radio music charts](#) or a song that brings you back to a childhood summer, Campus Connections invites you to share them with us, all summer long.

Please [click here](#) to see our full playlist.

Below are our latest submissions:

- [Show Me Love - Robin S](#)
Submitted by Joshua T.
- [Cruel Summer - Taylor Swift](#)
Submitted by Amy V.
- [Mud On The - Brad Paisley](#)
Submitted by Judy C.
- [Falling Apart - Michael Schulte](#)
Submitted by Fi S.
- [Summertime - Will Smith](#)
Submitted by Sarmella H.



Pictured: Cover art for [Show Me Love](#) by Robin S

*"We all need to be loved and to share love with others. this song puts that demand in the front."
- Joshua T.*

Please follow the guidelines below and [click here](#) to send us your submissions!

- You may include songs from any genre, songs in any language, or songs with no words/lyrics
- Only clean/radio-edited versions of songs will be accepted
- Residents who wish to submit songs should be assisted by staff, as needed. Please provide their first name and last initial



Visit the Hearts & Flour Bakery at Daley Plaza Farmers Market

50 W. Washington St.

Through October 24
(No market July 4)
7 am – 2 pm

[Click here](#) to view the list of vendors.

CAMPUS CONNECTIONS



MONTHLY RECOGNITIONS

DEPARTMENT APPRECIATION

August follows another round of monthly appreciation for the various departments on campus. This month we hosted special events for Supervisors.

We thank our Supervisors for all they do to support our residents and staff.

IT PAYS TO READ CAMPUS CONNECTIONS



With almost 600 entries combined in our "Ellen, Live!" and "Six Flags" ticket raffles, Misericordia would like to congratulate the following winners:

Ellen, Live!

- Constance Allen (Speech Therapy)

Six Flags Great America

- Paul Peterson (CILA)
- Felisa Arias (McAuley)
- Lea Weiner (CILA)
- Glenyse Davis (Quinlan)



We thank everyone who participated. Stay tuned for more fun opportunities. Remember, it pays to read Campus Connections!

AUGUST ANNIVERSARIES

- 44 Dawn Matke
- 43 Sr. Eileen Sullivan
- 36 Jim Ahlfeld
- 32 Ricardo Pagan
- 30 Targerine Miles-Coleman
- 29 Kerry Roach, Linda Zak
- 28 Kristen Dybas-Kupscuk, Teresa McDonald, Kevin Isleb
- 27 Mary Barner, Sheila King
- 26 Joseph Watkins
- 25 Lisa Adds
- 24 Cicley Mosley
- 23 Raquel Brow, Latishia Greer
- 22 Lenora Brown, Julie O'Sullivan
- 21 Edgar Muniz
- 20 Melissa Hart
- 19 Darcie Papparigian, Barbara Vialdores
- 18 Victor Echavarria, Kathleen Keating
- 16 Margarita Roman
- 14 Patrick Nee, Beth Woytek
- 13 Lindsey Wilkins, Brandon Harris, Sarah Powills
- 12 John Brady, Megan Christiansen
- 10 Sarah Peters, Manuel Aguilar, Mary Jo O'Brien, Beth Hadley
- 9 Isaac Hernandez, Sharon Metzger, Kelly O'leary, Rhea Peters, Katie Peterson, Shelley Smith, Ashley Kauffman
- 8 Fionn Boler, Hermalita Doss, Monica Ryan, Bozena Spahija, Loni Tierrablanca, Jazmin Tovar, Alison Slak
- 6 Vincent Martinelli, Heather Miller
- 5 Annemarie Bold, Jason Lewan, Angelique Oyervides, Nikolas Clark, Nicole Daniels, Corey Kurete, Dorel Tapia, Mieko Cook
- 4 Andrew Alvarez, Bilel Dekhili, Lulu Eshuis, Rosa Flores Gomez, Heba Hussain, Emma Johnston, Raygen Nabors, Yuliana Pena, Martha Sanchez Vasquez, Veronica Sturkey, Vivian Ukesone-Harris, Lizaida Velazquez, Alisia Truss, Madeleine Ngo Kendeck, Francine Yogo
- 3 Lisseth Acosta, Charnita Crumpton, Amanda Ferris, Saul Hernandez, Alma Martinez, Devyn McSheridan, Albert Montgomery, Elisa Page, Niecole Shipman Banks, Ava Lugo
- 2 Ashley Smith, Nathalie Virgil, Patherese Le, Gabriela Lopez Cuevas, Lamaas Polk Bey, Megan Busky, Monserrat Mercado, Hector Paraza Santana, Destinee Bell, Sarah Bridgeforth, Ashley Dickerson, Rasheeda Johnson, Karen Saffa, Jesenia Sanchez
- 1 Hannah Acaylar, Jessica Castillo, Katherine Lopez, Mateo Rey, Bianca Scott, Chyla Williams, Shania Young, Louavinia Brown, Andrew Roth, Tawsif Farhan, Gary Gantert, Lilith Robinson, Allison Perez Sotelo, Van Le, Joshua Reece



MONTHLY RECOGNITIONS

WELCOME NEW RESIDENTS



Ben - McAuley

- likes bedtime stories and music
- likes working on art projects
- enjoys visits with his family



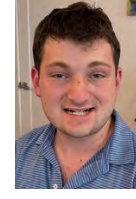
Sebastian - CILA

- loves to play the drums
- performed in several countries
- loves long bike rides with his dad



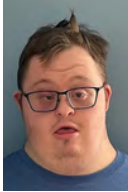
Jamice - CILA

- loves to swim
- plays the guitar!
- very adventurous and loves trying new things!



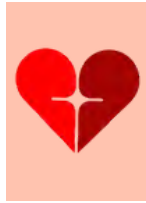
Elijah - CILA

- likes long walks
- loves old movies and musicals
- especially loves the Sound of Music!



Danny - CILA

- loves to play video games
- loves to perform



Ani'Rah - McAuley

- likes Disney movies and music
- likes interaction
- loves visits with family



Johnny - CILA

- he is a triplet!
- loves to play video games
- loves long car rides

WELCOME NEW STAFF



Adams, Cynthia (Nursing Services); **Brown, Jamiyah** (Rosemary Connelly); **Connelly, Timothy** (Resource Recreation); **Das, Shamonti** (Quinlan Terrace); **Dickerson, Melania** (Marian Center); **Fiskow, Philip** (Finance); **Garcia, Lucia** (Mercy Glen); **Harvey, Arianna** (Marian Center); **Hensel, Joshua** (Marian Center); **Jackson, Christopher** (Marian Center); **Jones, Isiah** (Quinlan Terrace); **Jutton, Myla** (Quinlan Terrace); **Koka, Franklyn** (McAuley Residence); **Man, Henry** (CILA Homes); **Marshall Jr. Terrence** (Quinlan Terrace); **McKeag, Katherine** (Intern); **Mwanza, Solange** (Marian Center); **Perozo Grimaldi, Maria** (Resource Recreation); **Pierce, Angel** (Marian Center); **Robertson, Nykia** (Marian Center); **Scarelli, Pachina** (DT Day Training); **Shawley, Tristan** (Marian Center); **Spencer, Shirley** (Quinlan Terrace); **Steuer, Rylie** (Intern); **Stevens, Alisha** (Village); **Vanourek, Victoria** (Shannon Apartments); **Walker, Thalia** (Village); **Williams, Quandria** (Quinlan Terrace); **Young (Jackson), Nicole** (McAuley Residence)

IN MEMORIAM

Our deepest condolences go to the loved ones of:



Austin M
(1963 - 2024)



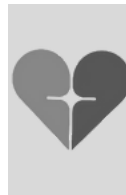
John H
(1967 - 2024)



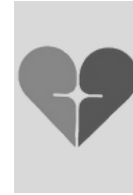
Stacey D
(1978 - 2024)



Sarah C
(1977 - 2024)



Julio G
(McAuley Resident since 1996)



Dalexia R
(2015 - 2024)

Please click their underlined names to view their online memorial pages, if available.

“Blessed are those who mourn, for they shall be comforted.” Matthew 5:4

Stay tuned for weekly Campus Connections updates sent via email. You can also find previous issues of Campus Connections in ADP and [here](#) on our website. If you have any questions or feedback for us, send your messages [here](#)! Be sure to include your name, work area, and an email we can use to contact you!